



Submittal Data Sheet

AY-XPC9CU  
9,000 BTU Wall Mount Indoor Unit

Job Name:	
Reference:	Date:



Sharp Air app available in Apple® App Store and Google® Play Store.

**Product Features**

- A2L refrigerant R32
- 50ft long "Coanda Airflow"
- "Multi Space" air circulation
- Built-in Wi-Fi Adapter

CAPACITIES			
Cooling	Rated Capacity	BTU/H	9,000
Heating	Rated Capacity	BTU/H	11,000

NOTE: Test conditions are based on AHRI 210/240.

Cooling at 95°F Indoor: 80°F (26.7°C) DB / 67°F (19.4°C) WB  
Heating at 47°F Indoor: 70°F (21.1°C) DB / 60°F (15.6°C) WB

REFRIGERANT	
Type	R32

ELECTRICAL		
Voltage, Phase, Frequency		208/230, 1, 60
Guaranteed Voltage Range	V AC	187 - 253
Voltage: Indoor - Outdoor, S1-S2	V AC	208/230
Voltage: Indoor - Outdoor, S2-S3	V DC	24
Short-circuit Current Rating (SCCR)	kA	5.0
MCA	A	0.3

PIPING		
Gas Pipe Size O.D. (Flared)	In. (mm)	3/8 (9.52)
Liquid Pipe Size O.D. (Flared)	In. (mm)	1/4 (6.35)

FAN and SOUND		Cross Flow Fan	
Fan			
Fan Motor Full Load Amperage	A		0.3
Fan Motor Output	W		30
Airflow Rate at Cooling, Dry	CFM		413 / 360 / 279 / 198 / 145
Airflow Rate at Cooling, Wet	CFM		379 / 330 / 255 / 182 / 133
Airflow Rate at Heating, Dry	CFM		413 / 360 / 297 / 233 / 145
Sound Pressure Level (Cooling)	dB(A)		41 / 36 / 31 / 25 / 22
Sound Pressure Level (Heating)	dB(A)		42 / 37 / 32 / 26 / 22

DIMENSION and WEIGHT		Unit	Package
Dimensions	W x H x D: In. (mm)	34.6 x 11.4 x 9.0 (879 x 289 x 229)	37.1 x 11.1 x 13.5 (942 x 282 x 342)
Weight	lbs. (kg)	22 (10)	24 (11)

OPERATING TEMPERATURE		Max.	Min.
Cooling	°F (°C)	90 (32.2)	70 (21.1)
Heating	°F (°C)	81 (27.2)	-

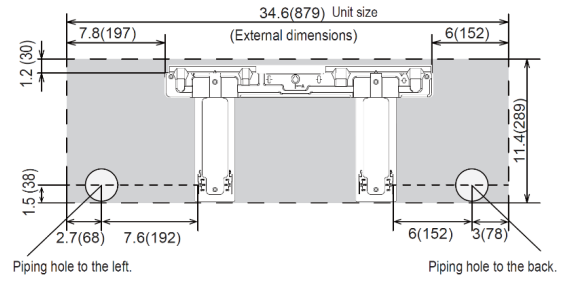
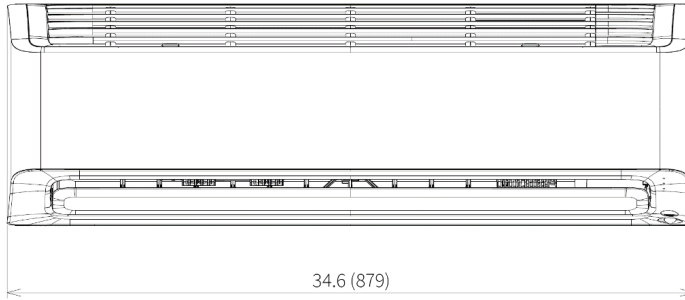
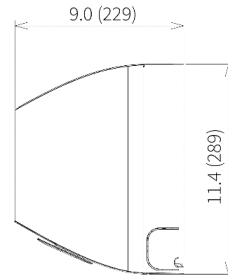
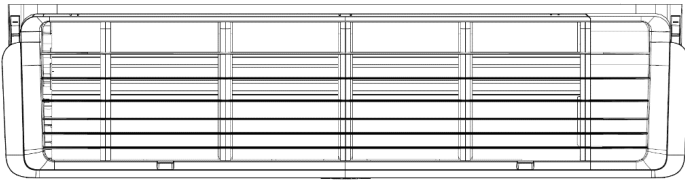
OTHERS		Indoor Unit
External Finish Color		Premium White

NOTE: Test conditions are based on AHRI 210/240.

**DIMENSIONS: AY-XPC9CU**

**Indoor Unit**

Length unit: inch (mm)



**SHARP**

Sharp Corporation, Japan  
2-1-25, Kyutaromachi, Chuo-ku, Osaka

